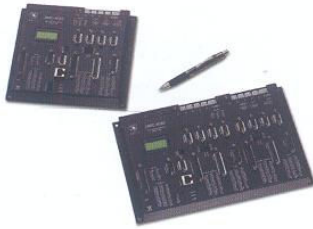


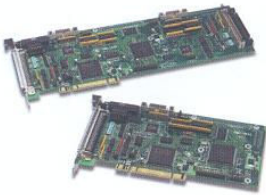
# PC Based Multiaxis Motion Controllers

## STAND ALONE MOTION CONTROLLERS



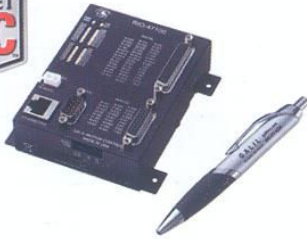
- DMC-41x3 10/100 Base-T Ethernet/USB/RS232 Econo Series 1-8axis
- DMC-40x0 100Base-T Ethernet/RS232 Accelera Series 1-8 axis
- DMC-21x3 10Base-T Ethernet/RS232 Econo Series 1-8 axis
- DMC-22x0 10/100Base-T Ethernet/RS232 Optima Series 1-8 axis
- DMC-20x0 USB/RS232 Optima Series 1-8 axis

## PCI Bus Motion Controllers



- DMC-18x6 PCI Accelera Series 1-8 axis
- DMC-18x0 PCI Optima Series 1-8 axis
- DMC-18x2 PCI Econo Series 1-4 axis
- DMC-1417 PCI 1 axis

## RIO



- Intelligent Compact Ethernet PLC
- 8 analog inputs  $\pm 10V$ ,  $\pm 5V$ , 0-10V, 0-5V
- 8 analog outputs  $\pm 10V$ ,  $\pm 5V$ , 0-10V, 0-5V
- 16 optically isolated inputs
- 8 isolated outputs rated at 500mA each
- +8 isolated outputs rated at 25mA each

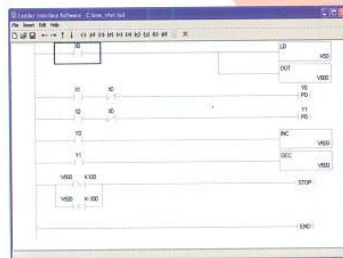
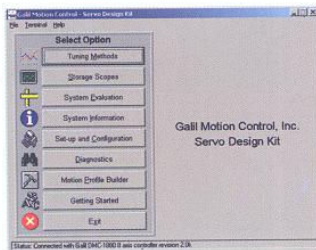
### Features

RTD and Thermocouple Functions, Real time clock, PWM Output, Modbus capability, Data Logging and E mail Functions.

## Software



- Utilities (includes SmartTerm)
- C-Programmers Tool Kit
- WSDK Servo Tuning
- ActiveX Tool Kit
- AutoCAD Translator
- DDE for Wonderware



## PC Based Multiaxis Motion Controller Comparison Tables

Features	Ethernet/USB/RS232			PCI Product Comparison Chart	
	Motion Controllers				
	DMC-40x0 Acelera	DMC-21x3 Econo	DMC-41x3 Econo	DMC-18x6 Acelera	DMC-18x2
Communication interface	Ethernet 10/100Base-T	Ethernet 10Base-T	Ethernet 10/100Base-T	PCI	PCI
	Rs232 x 2 (115 kb)	RS232 x 1 (19.2 kb)	RS232 x 1 / USB		
Form factor	box	card or DIN-rail	card	card	card
Number of axes	x=1,2,3,4,5,6,7,8	x=1,2,3,4,5,6,7,8	x=1,2,3,4,5,6,7,8	x=1,2,3,4,5,6,7,8	x=1,2,3,4
Controls both servo and stepper	Yes	Yes	Yes	Yes	Yes
Connector type	D-type	96-pinDIN	D-type	100-pin SCSI	100-pin SCSI
Mating interconnect module	N/A	ICM-20100/20105	N/A	ICM-1900/-2900	ICM-1900/-2900
Power requirement	20-80 VDC	5V, +/-12V or 9-72	20-60 VDC	consumes from PC	consumes from PC
Maximum encoder rate	22 MHz	12 MHz	15MHz	22 MHz	12 MHz
Maximum stepper rate	6 MHz	3 MHz	3 MHz	6 MHz	3 MHz
Minimum servo update time	1-2 axes: 62 µsec	1-2 axes: 250 µsec	1-2 axes: 125 µsec	1-2 axes: 62 µsec	1-2 axes: 250 µsec
	7-8 axes: 187 µsec	7-8 axes: 625 µsec	7-8 axes: 500 µsec	7-8 axes: 187 µsec	N/A
Opto isolated digital inputs	Yes	Yes with ICM-20105	Yes	Yes	No
# of uncommitted digital inputs	1-4 ax: 8; 5-8 ax:16	1-4 ax: 8; 5-8 ax:16	1-4 ax: 8; 5-8 ax:16	1-4 axes:8 ;5-8 axes:24 isolated	8
# of uncommitted digital outputs	1-4 ax: 8; 5-8 ax:16*	1-4 ax: 8; 5-8 ax:16	1-4 ax: 8; 5-8 ax:16	1-4 axes:8 ;5-8 axes:16	8
# of analog inputs	8	8 (with DB-28040)	8	8	0
# of extended I/O	32	40 (with DB-28040)		64 with DB-14064	64 with DB-14064
Dual Encoder for each axis	9	Yes	Yes	Yes	No
Program memory size(lines x chr)	2000 x 80	1000 x 80	2000 x 80	2000 x 80	1000 x 80
Array size (number of elements)	16000	8000	16000	16000	8000
# of variables	510	510	510	510	254
# of tasks for multitasking	8	8	8	8	8
Command execution speed	40 µsec	more than 400 µsec		40 µsec	400 µsec
Helical and Tangential	Yes	Yes	Yes	Yes	Yes
Drive options from Galil	AMP-43020	AMP-20341	AMP-430x0	AMP-19520	AMP-19520
	AMP-43040	AMP-204x0 or	AMP-43140	AMP-19540	AMP-19540
	AMP-43140	AMP-205xx	SDM-44040		
	SDM-44040	SDM-20242	SDM-44140		
	SDM-44140	SDM-206x0			

